

PART 1: FEB – JUNE  
2021 SEASON



**H@tHouse**  
THEATRE

Dear friends, old and new, it's been a long time between drinks... Welcome home. We've missed you.

Having lost a year of physical connection with you, SEASON 2021 offers a call on the wind for you to find your way home to great theatre. Join us on this joyful journey, forging fresh footprints towards new futures as we dive into our relationship with the world, our cultures and each other.



Delivered over two halves, 2021 has a slightly different feel. SEASON 2021: PART ONE is a celebration of home, a pendulum swing back to the local, reigniting regional pride and capturing the spirit of our community.

Our Season opener, *Those Who Fall in Love Like Anchors Dropped Upon the Ocean Floor*, sees HotHouse proudly return to its roots making theatre on the Border and catapulting home-grown talent onto the mainstage, in this hilarious, whimsical examination of love and connection. May ushers in the *Mission Songs Project*, celebrating rediscovered First Nations stories and songs from the Missions, supported by four local songwriters and the glorious sounds of a local Community choir. In June, *Breaking the Castle* finally arrives - the exquisite and gripping story of one man's survival and redemption, by the extraordinary Peter Cook.

Get up close (but not too close!) to the artists and the action this year. Our COVID-Safe intimate setting will reconnect you to the power of theatre with season after season of exceptional Australian storytelling, staged readings, development showings and post-show Q&As. Unpack the big ideas of season works with La Trobe Conversations and relish great nights out with family and friends, now that we can.

To get you warmed up, we kick off with *Galah Bar TV*. Gather a group of friends and join us as we broadcast on the big screen outside The Cube, or enjoy a night in your PJs, streaming direct into your lounge room during the UPSTREAM Festival.

2020 was a long year. But in 2021, re-enter the world and find your way home to HotHouse.

We are Local. National. Live.

And we can't wait to welcome you back.

A handwritten signature in blue ink that reads "Karla" with a small "x" below it.

Karla Conway  
Artistic Director/CEO

## Subscribing in 2021

There are two ways you can subscribe in 2021.

### Purchase a Subscription package - All three plays for \$105

See all three shows and save. Just choose your dates at the time of booking.

### Purchase a Flexi-Sub - \$121 (inc. administration fee)

Pay a small \$10 administration fee and secure your seats when you are ready to lock in your dates.

## Things to remember

- In 2021, we will be moving to allocated seating to allow for COVID-Safe social distancing
- Seating capacity may be reduced to comply with COVID regulations and allocations will be made on a first come, first served basis.
- Subscribers will have first access to the best seats, so subscribe early to secure your preferred seats.
- To guarantee sitting with friends, we recommend you book together.
- HotHouse will continue to act on current health advice and regulations to keep you safe.

*Take out your subscription at [hothousetheatre.com.au](https://hothousetheatre.com.au)*

*FIND YOUR WAY HOME TO LOVE*

# THOSE WHO FALL IN LOVE LIKE ANCHORS DROPPED UPON THE OCEAN FLOOR

BY FINEGAN KRUCKEMEYER

Time slows when you're in love.

From a Cold War Russian submarine to a Parisian watch shop, an Appalachian snowfield to an uncomfortable first date, this charming, quirky, and funny meditation on love is a tale about fleeting moments and chance encounters.

Follow eleven characters across multiple times and places as they search for love, sometimes with unexpected consequences.

HotHouse is thrilled to welcome back to the Butter Factory stage, Albury actors Rachel McNamara (*Rabbit Hole, All Saints*) and Grace Rouvray (*Ladies in Black, 600 Bottles of Wine - Netflix*), joined by Wodonga actor Nick Steain (*The Good Doctor, Accidental Death of an Ancharist*) making his HotHouse Theatre debut.

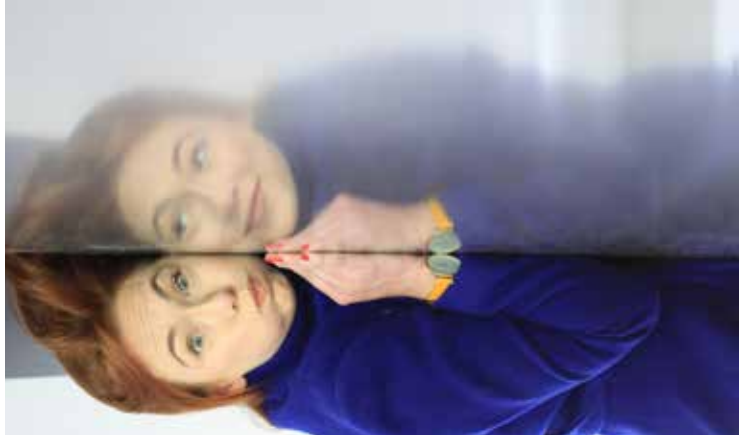
"...entertaining, thoughtful and thought-provoking, the best kind of theatre to go and see with friends." Nerida Dickinson, ArtsHub

WITH: Rachel McNamara, Grace Rouvray and Nick Steain

DIRECTOR: Karla Conway

DESIGNER: Sophie Woodward

LIGHTING DESIGNER: Kofi Isaacs



## Performance Times

Wed. 17 March - 6:30 PM

Thurs. 18 March - 8:00 PM

Fri. 19 March - 8:00 PM

Sat. 20 March - 3:00 PM & 8:00 PM

Tues. 23 March - 8:00 PM

Wed. 24 March - 6:30 PM

Thurs. 25 March - No Performance

Fri. 26 March - 8:00 PM

Sat. 27 March - 3:00 PM & 8:00 PM

*FIND YOUR WAY HOME TO CULTURE*

# MISSION SONGS PROJECT

BY JESSIE LLOYD



Searching for the secular songs that were sung after church, Jessie Lloyd explores the day to day life on the missions, settlements and reserves, through music.

Through intimate storytelling, moving harmonies and historical insights, *Mission Songs Project* takes audiences on a musical journey across Australia.

Performed by an extraordinary trio of Indigenous singers, Lloyd unearths almost forgotten stories that illuminate the history of our Aboriginal and Torres Strait Elders, families, and communities. Using humour and truth, they share the voices of Elders as they would around a warm campfire or kitchen table.

Celebrate with us as our four local songwriters, supported by a choir of local Community members, take to the stage with the inimitable Jessie Lloyd to share stories of our region, through song.

## Performance Times

Wed. 12 May - 7:00 PM

Thurs. 13 May - 7:00 PM

Fri. 14 May - 7:00PM

Sat. 15 May - 7:00 PM

CREATOR: Jessie Lloyd

FEATURING: Aunty Valda Murray, Racheal Oak Butler, Aaron Perkins-Kemp-Berger and Bobby Whybrow

FIND YOUR WAY HOME TO YOUR SOUL

# BREAKING THE CASTLE

BY PETER COOK

David can't get enough, of anything. Alcohol, drugs, women, gambling – whatever it takes to escape and this bender could be his last. Until, in the mountains of South-East Asia, he is offered a chance at redemption.

Visceral, fierce, and uplifting *Breaking the Castle* is an exquisitely rendered, gripping tale and performance from creator Peter Cook, as a man yearning for connection.

“Peter Cook gives us a simple, standout performance...”

XSENTERTAINMENT

“Peter Cook fills this smartypants Everyman role with relish – and a smirk.” GREENROOM

WRITTEN & PERFORMED BY: Peter Cook

DIRECTOR: Caroline Stacey

DESIGN: Imogen Keen

LIGHTING DESIGN: Gerry Corcoran

SOUND DESIGN: Kimmo Vennonen



## Performance Times

Tues. 15 June - 8:00 PM

Wed. 16 June - 6:30 PM

Thurs. 17 June - 8:00 PM

Fri. 18 June - 8:00 PM

Sat. 19 June - 3:00 PM & 8:00 PM

## GALAH BAR TV



UP  
ST  
RE  
AM

Take a late-night TV talk show, mix it with HotHouse's legendary cabaret and you get the fabulous new GALAH BAR TV!

Expect the unexpected as our host interviews local personalities, polities and artists, plus a weirdly wonderful line-up of homegrown comedy, circus and music.

Organise your friends, book a table, and watch the show on the big screen in The Cube Courtyard on Friday 5 March, or hang out at home and stream to your favourite device across the UPSTREAM Festival weekend.

Presented as part of UPSTREAM - Festival of Art + Culture.

### Ways to watch

#### In Person

Friday 5 March - From 7:30 PM

Get together a group and book a table in the Cube Courtyard to watch on the big screen

Tickets - \$10.00 Group of five \$40.00

#### Streaming 5-8 March

Stream the show to your favourite device on-demand across the UPSTREAM weekend

Single Ticket - \$10.00 Household Ticket \$25.00

# SEASON 2021: PART ONE

SHOW ONE: *FIND YOUR WAY HOME TO LOVE*  
17 - 27 March 2021  
A HotHouse Theatre Production  
**THOSE WHO FALL IN LOVE LIKE ANCHORS DROPPED  
UPON THE OCEAN FLOOR**  
by Finegan Kruckemeyer

SHOW TWO: *FIND YOUR WAY HOME TO CULTURE*  
12 - 15 May 2021  
HotHouse Theatre in association with Performing Lines presents  
**MISSION SONGS PROJECT**  
by Jessie Lloyd

SHOW THREE: *FIND YOUR WAY HOME TO YOUR SOUL*  
15 - 19 June 2021  
HotHouse Theatre in association with The Street, Canberra presents  
**BREAKING THE CASTLE**  
by Peter Cook

Go to  
[hothousetheatre.com.au](http://hothousetheatre.com.au)  
to subscribe

## SEASON 2021 TICKET PRICES

FULL PRICE - \$50.00

CONSESSION - \$42.00

GROUP (8 OR MORE) - \$40.00

FULL TIME STUDENT - \$20.00

FULL SUBSCRIPTION - \$105.00

FLEXI-SUB - \$121.00 (inc. \$10 admin fee)

HotHouse Theatre gratefully acknowledges the support of our government funders



## HotHouse Theatre SEASON 2021 Partners



## SEASON 2021: PART ONE Production Partners

Those Who Fall in Love Like Anchors  
Dropped Upon the Ocean Floor



is proudly supported by the  
NSW Government through  
Create NSW as part of Arts Restart

Mission Songs Project



Breaking the Castle



**HotHouse**  
THEATRE

ABN 93 005 499 758

Gateway Island, Wodonga, Victoria 3690 PO BOX 479, Wodonga, Victoria 3689  
02 6021 7433 [info@hothousetheatre.com.au](mailto:info@hothousetheatre.com.au)